



The Local offer

A guide to understanding and accessing your Local Offer page

Contents

The Local Offer	1
What is the Local Offer?	3
What must be included in the Local Offer?	4
Example: How to use the Local Offer to access information.	6
Feedback & how to complain about the Local Offer	8
References	9

What is the Local Offer?

Each local authority is required to have a Local Offer. The Local Offer webpage should set out in one place all information about provision the local authority 'expect to be available' across education, health and social care. Local authorities should include provision which they believe will actually be available (SEND CoP, 2015).

The Local Offer is for children and young people with Special Educational Needs and Disabilities (SEND), including those who do not have Education, Health and Care (EHC) plans and their families.

To find your Local Offer page simply write the name of your local authority followed by the term "**Local Offer**" - into your internet search engine and press return. The results of the search should include a link to your local authority Local Offer website.

The name of your local authority will be on your council tax bill, and it should be on the signs outside your local schools, libraries, swimming pools etc. If you are unsure about what local authority you live in you can find out by visiting: <https://www.gov.uk/find-local-council>.

What must be included in the Local Offer?

The Local Offer must have information about:

Education & Training

- Special educational, health and social care provision for children and young people with SEND
- Other educational provision, for example sports or arts provision
- Post-16 education, training, apprenticeships and supported internships
- Arrangements for travel to and from schools, post-16 institutions and early years providers
- Institutions approved under Section 41 of the Children and Families Act 2014
- Support to help children and young people move between phases of education (for example from early years to primary school)
- Support available to young people in higher education, particularly the Disabled Students Allowance (DSA) and the process and timescales for making an application for DSA

Education, Health and Care Plans

- Details of how parents and young people can request an assessment for an EHC plan
- Arrangements for identifying and assessing children and young people's SEND –including arrangements for EHC needs assessments

Other Information & Support

- How to access your local SEND Information, Advice and Support (IAS) service
- Sources of information, advice and support in the local authority's area relating to SEND
- Information about provision to assist in preparing children and young people for adulthood
- Childcare, including suitable provision for children with SEND
- Hobbies/ Leisure activities

Complaints & Appeals

- Arrangements for resolving disagreements and for mediation, and details about making complaints
- Parents' and young people's rights to appeal a decision of the local authority to the First-tier Tribunal (SEND) in respect of SEND and provision
- The local authority's accessibility strategy (under paragraph 1 Schedule 10 to the Equality Act 2010)

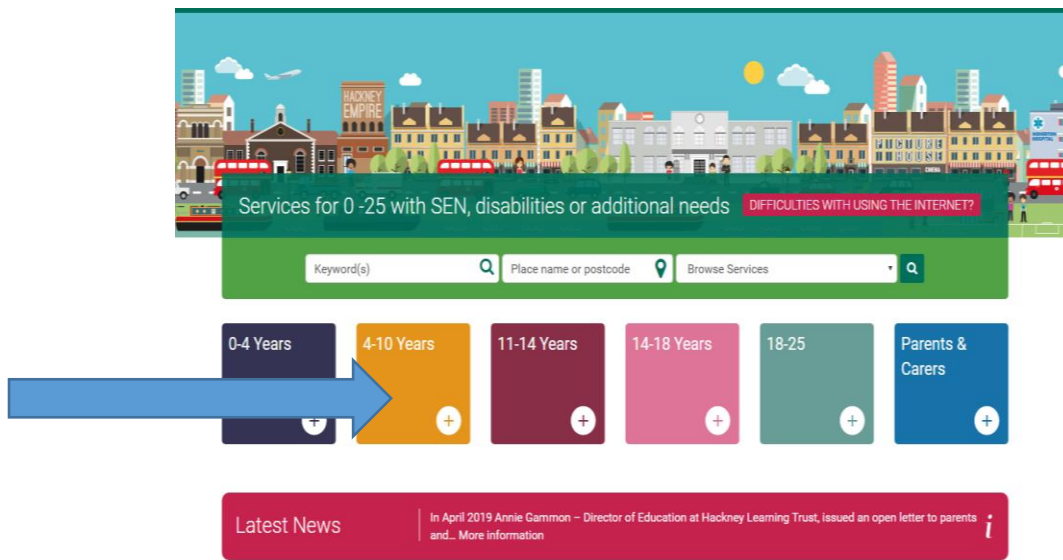
The Local Offer **should** cover:

- Support available to all children and young people with SEND from universal services such as schools and GPs
- Targeted services for children and young people with SEND who require additional short-term support over and above that provided routinely as part of universal services
- Specialist services for children and young people with SEND who require specialised, longer term support

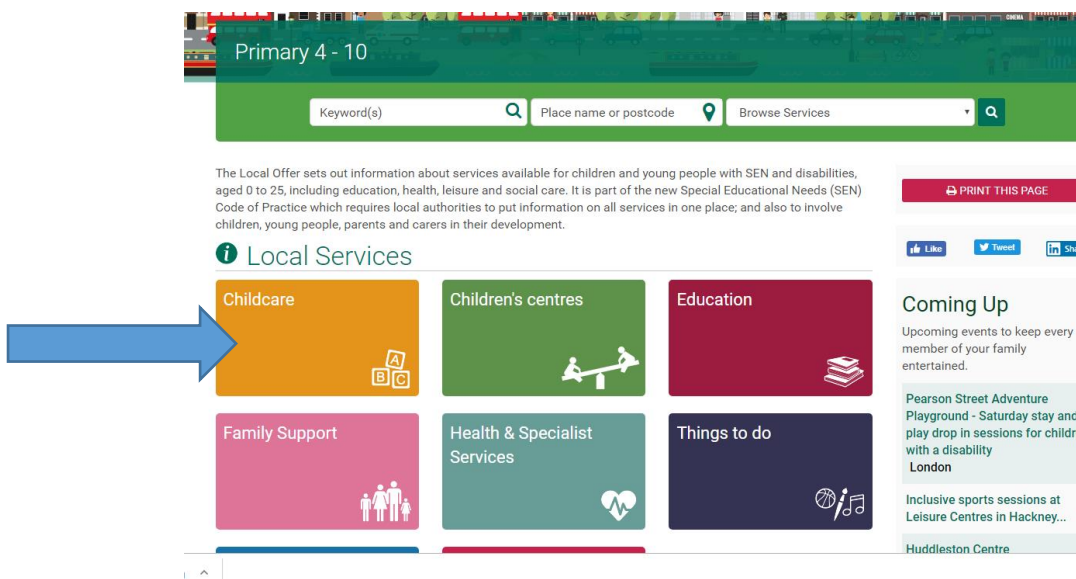
Example: How to use the Local Offer to access information.

Note: each Local Offer page looks different and is unique to each local authority, however most share similar features. Below is an example using Hackney's Local Offer page. Their Local Offer page has similar features to most other Local Offer pages. If you cannot find the information you need you can feedback on the Local Offer Webpage or contact your local IAS service.

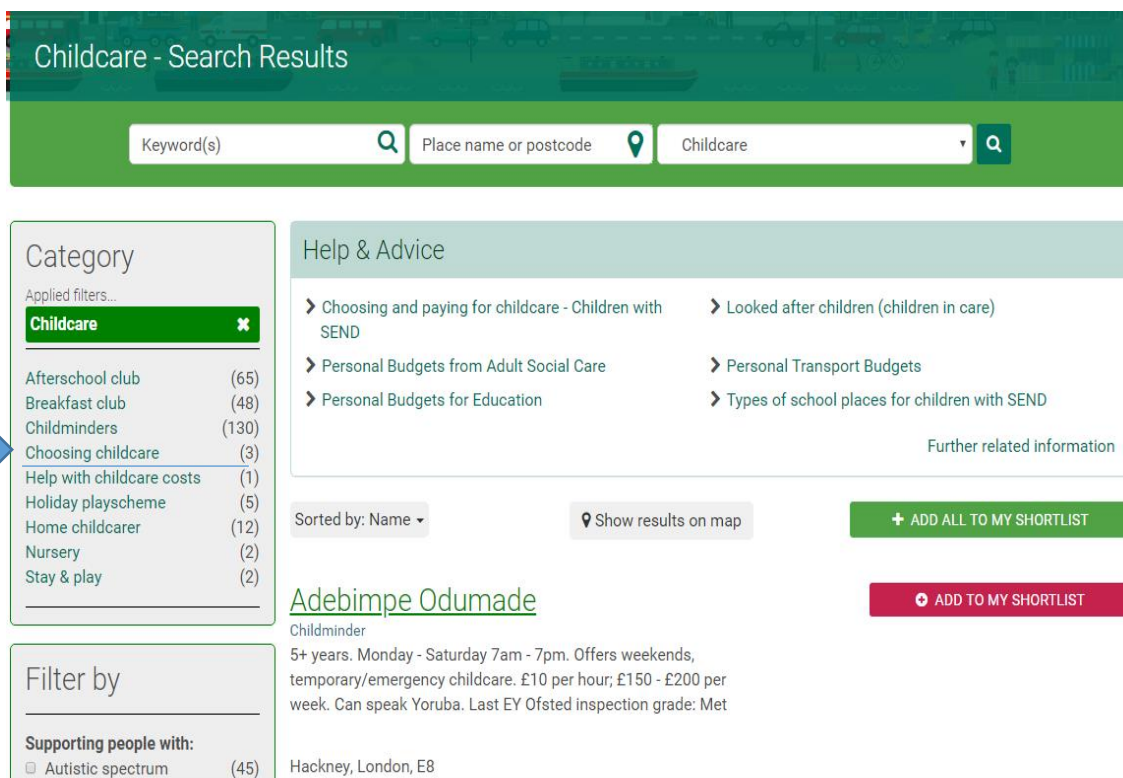
Step 1: Select age of the person you would like information for.



Step 2: Select the topic you would like information on, for example, childcare.



Step 3: Select the option within childcare that you would like information on, for example, choosing childcare.



Childcare - Search Results

Keyword(s) Place name or postcode Childcare

Category
Applied filters...
Childcare ✕

- Afterschool club (65)
- Breakfast club (48)
- Childminders (130)
- Choosing childcare (3)
- Help with childcare costs (1)
- Holiday playscheme (5)
- Home childcarer (12)
- Nursery (2)
- Stay & play (2)

Filter by
Supporting people with:
 Autistic spectrum (45)

Help & Advice

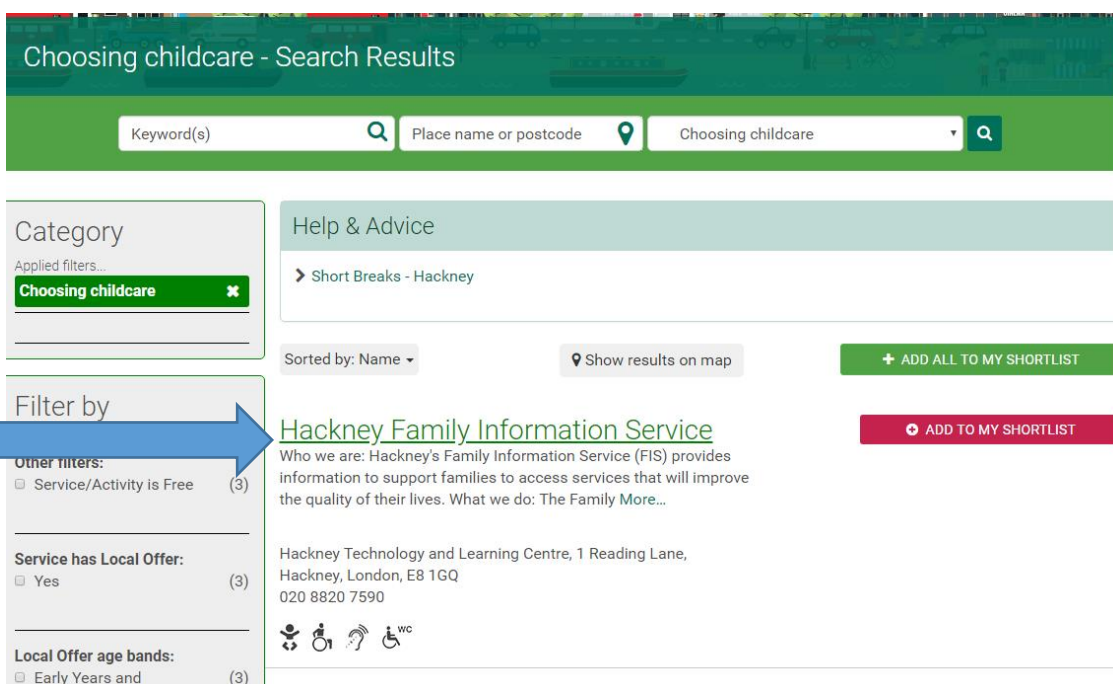
- Choosing and paying for childcare - Children with SEND
- Personal Budgets from Adult Social Care
- Personal Budgets for Education
- Looked after children (children in care)
- Personal Transport Budgets
- Types of school places for children with SEND

Further related information

Sorted by: Name

Adebimpe Odumade
Childminder
5+ years. Monday - Saturday 7am - 7pm. Offers weekends, temporary/emergency childcare. £10 per hour; £150 - £200 per week. Can speak Yoruba. Last EY Ofsted inspection grade: Met
Hackney, London, E8

Step 4: Click on chosen result to read information.



Choosing childcare - Search Results

Keyword(s) Place name or postcode Choosing childcare

Category
Applied filters...
Choosing childcare ✕

Filter by
Other filters:
 Service/Activity is Free (3)

Service has Local Offer:
 Yes (3)

Local Offer age bands:
 Early Years and (3)

Help & Advice

- Short Breaks - Hackney

Sorted by: Name

Hackney Family Information Service
Who we are: Hackney's Family Information Service (FIS) provides information to support families to access services that will improve the quality of their lives. What we do: The Family More...
Hackney Technology and Learning Centre, 1 Reading Lane, Hackney, London, E8 1GQ
020 8820 7590

Feedback & how to complain about the Local Offer

Local authorities must involve children and young people with SEND and their parents in:

- Adding content to the Local Offer
- Reviewing the Local Offer
- Making comments about the Local Offer

Local authorities should do this in a way which ensures that children, young people and parents feel they have participated fully in the process and have a sense of co-ownership. This is known as 'co-production'. Local authorities should make use of Parent Carer forums, young people forums and other local groups to engage families to participate.

Keeping the Local Offer under review

Local authorities must keep their educational and training provision and social care provision under review and this includes the quality and condition of that provision.

Publishing comments/feedback about the Local Offer

Local Authorities must publish comments about their Local Offer received from or on behalf of children and young people with SEND and their parents.

Comments must be published if they relate to:

- The content of the Local Offer, which includes the quality of existing provision and any gaps in the provision
- The accessibility of information in the Local Offer
- How the Local Offer has been developed or reviewed

Local authorities are not expected to publish responses to every comment individually but could, for example, adopt a 'you said, we did' approach.

Local authorities must publish their response to comments received within the Local Offer and this must include details of the action they intend to take. They should consult children and young people with SEND and their parents in relation to the action they intend to take.

Information, Advice and Support (IAS) Services can help you to find your Local Offer. They can also help you to tell your local authority what you think about your Local Offer. Find your local IAS service by visiting: www.councilfordisabledchildren.org.uk

References

Department for Education & Department of Health and Social Care (2015).
Special Educational Needs and Disabilities Code of Practice: 0-25 years.

Available at:

[https://assets.publishing.service.gov.uk/government/uploads/system/uploads/attachment_data/file/398815/SEND Code of Practice January 2015.pdf](https://assets.publishing.service.gov.uk/government/uploads/system/uploads/attachment_data/file/398815/SEND_Code_of_Practice_January_2015.pdf)

(Accessed September 3 2019).